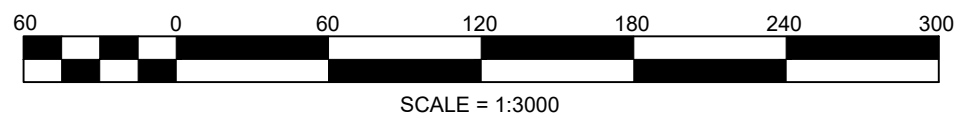


WEST RIDGE TRAILSIDE NEIGHBOURHOOD PLAN

LOT 6, PART OF THE WEST HALF OF LOT 7 AND PART OF LOT 8, CONCESSION 2 (SOUTH ORILLIA) FORMERLY IN THE GEOGRAPHIC TOWNSHIP OF ORILLIA NOW IN THE CITY OF ORILLIA COUNTY OF SIMCOE



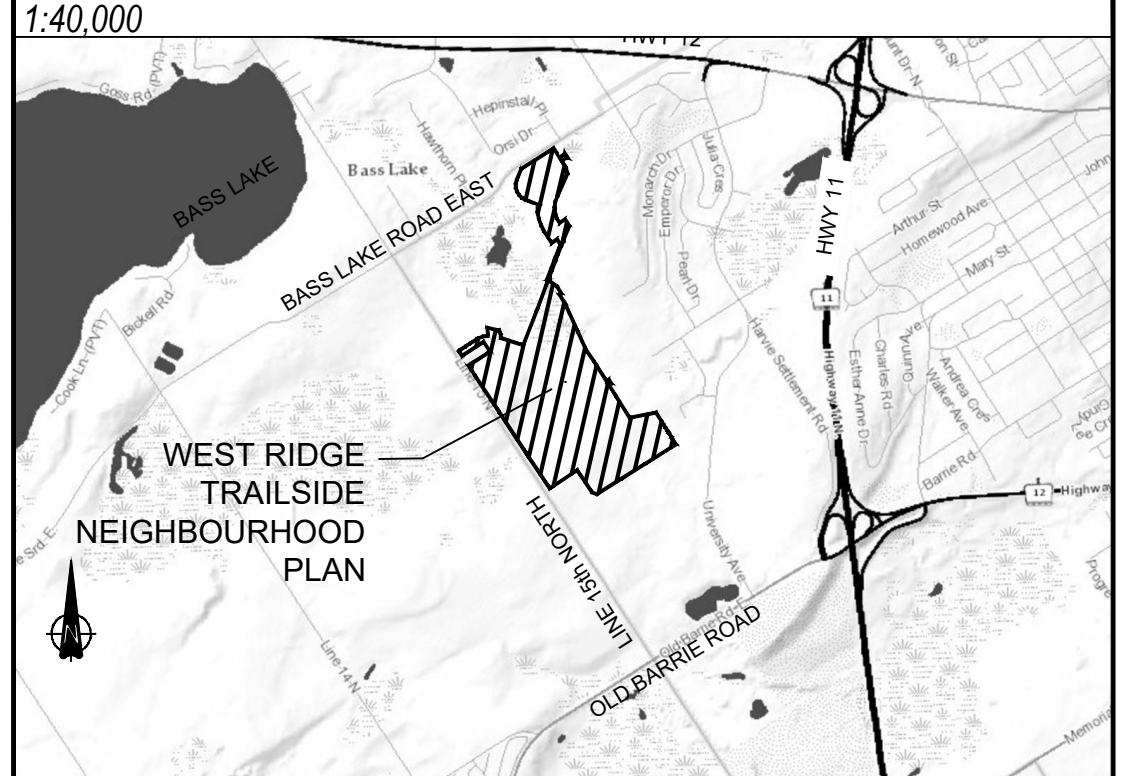
LEGEND

- SUBJECT LANDS (WEST RIDGE - TRAILSIDE)
- LOW DENSITY RESIDENTIAL (SINGLE DETACHED / SEMI-DETACHED)
- LOW DENSITY RESIDENTIAL (STREET TOWNHOUSES)
- MEDIUM DENSITY RESIDENTIAL
- HIGH DENSITY RESIDENTIAL
- SCHOOL
- COMMERCIAL
- PARKLAND (OPEN SPACE)
- WALKWAY / SERVICING
- ENVIRONMENTAL PROTECTION & EXISTING STORMWATER MANAGEMENT FACILITY
- ENVIRONMENTAL PROTECTION WOODLOT

LEGEND - TRAIL SYSTEMS

- ◆◆◆ PROPOSED TRAIL SYSTEM
- EXISTING MULTI-USE TRAIL
- PROPOSED MULTI-USE TRAIL (3m Asphalt)
- - - SIDEWALK / TRAIL CONNECTION
- | CONCEPTUAL EP TRAIL

KEY PLAN



Date: November 1, 2021
Rev: Aug 17, 2022