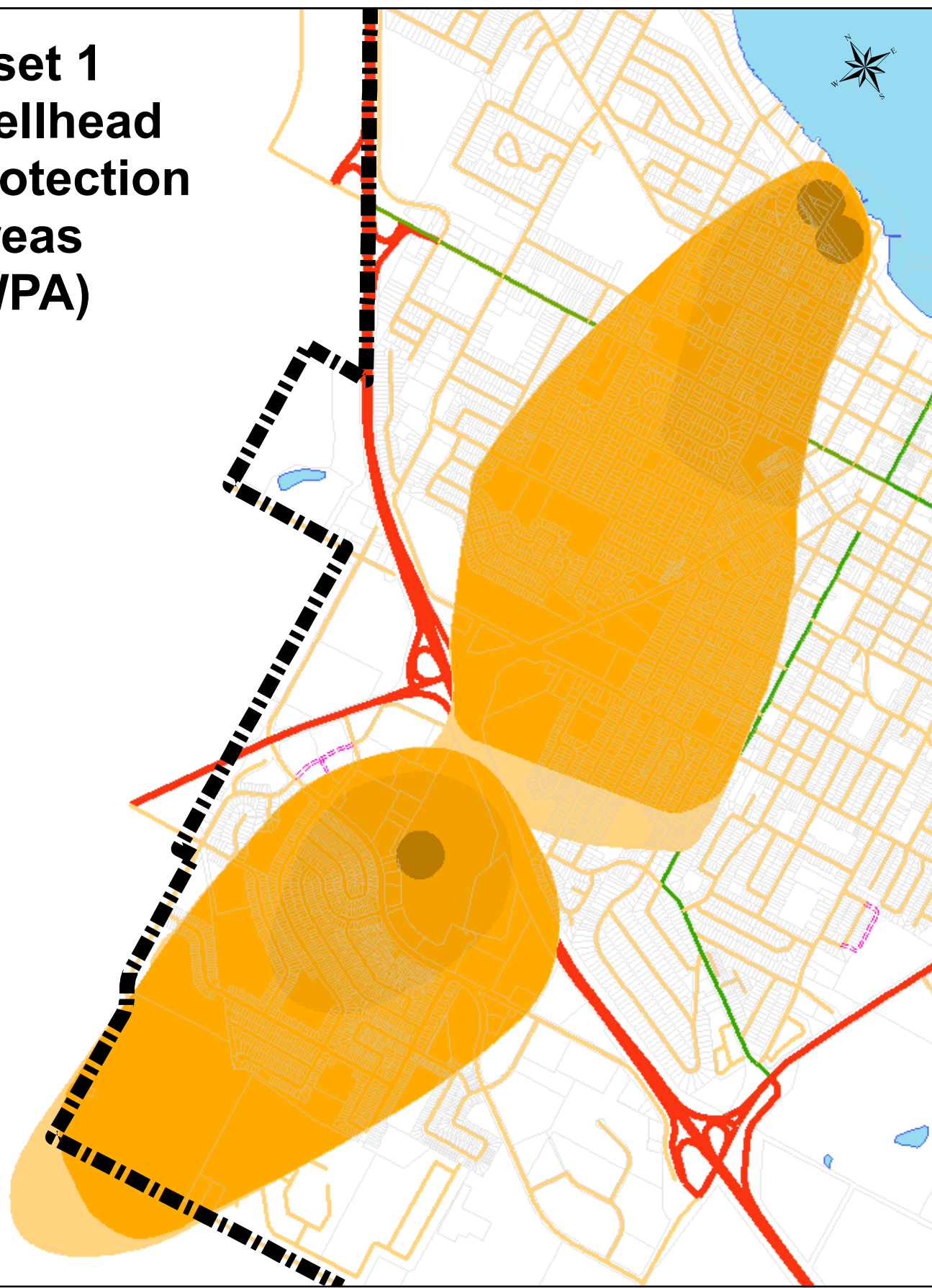


**Inset 1
Wellhead
Protection
Areas
(WPA)**



City of Orillia Official Plan

**Schedule F
Source Water Protection**

Intake Protection Zones (IPZ)

- Intake Protection Zone One (IPZ1)
- Intake Protection Zone Two (IPZ2)

Vulnerability Score

- Vulnerability Score 10
- Vulnerability Score 8
- Vulnerability Score 6
- Vulnerability Score 4
- Vulnerability Score 2

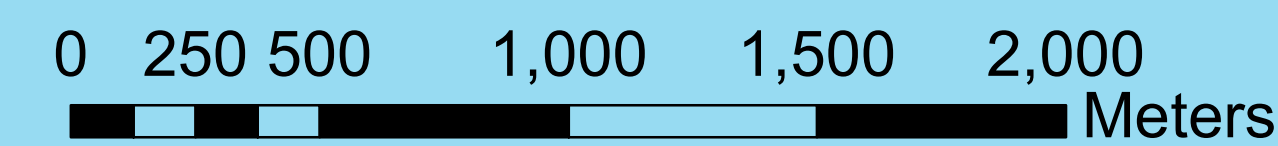
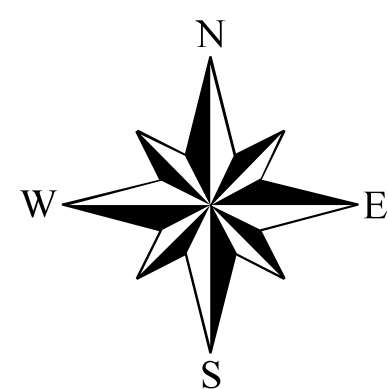
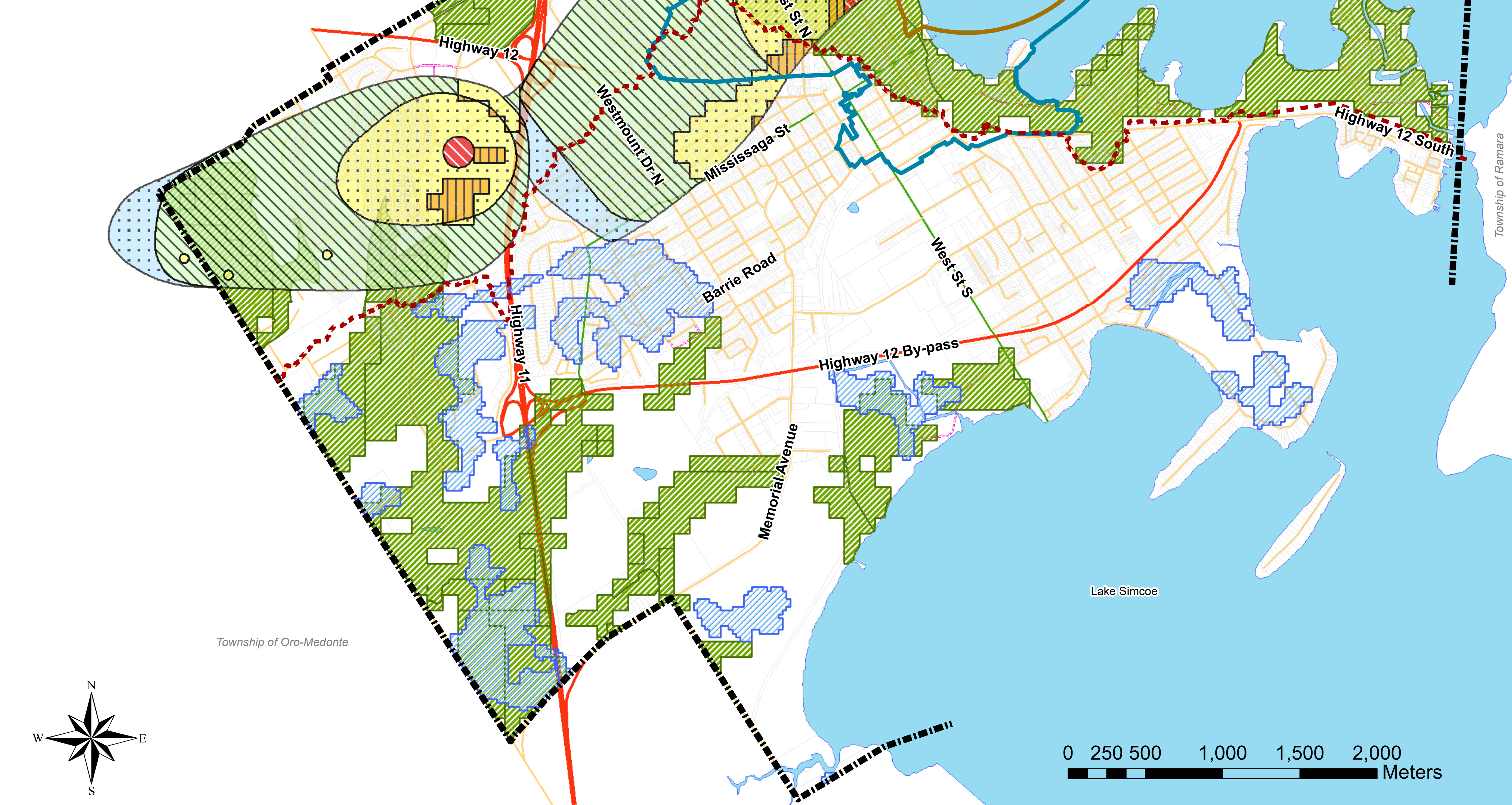
Wellhead Protection Areas (WPA) - Inset 1

- Wellhead Protection Area A (100m)
- Wellhead Protection Area B (2 Years)
- Wellhead Protection Area C1 (10 Years)
- Wellhead Protection Area D (25 Years)

Significant Groundwater Recharge Areas

- Ecologically Significant Groundwater Recharge Area
- Significant Groundwater Recharge Area

- Lake Simcoe Watershed Boundary
- City Boundary



Date Approved by Council: November 26, 2018

Consolidation Date: June 1, 2024