

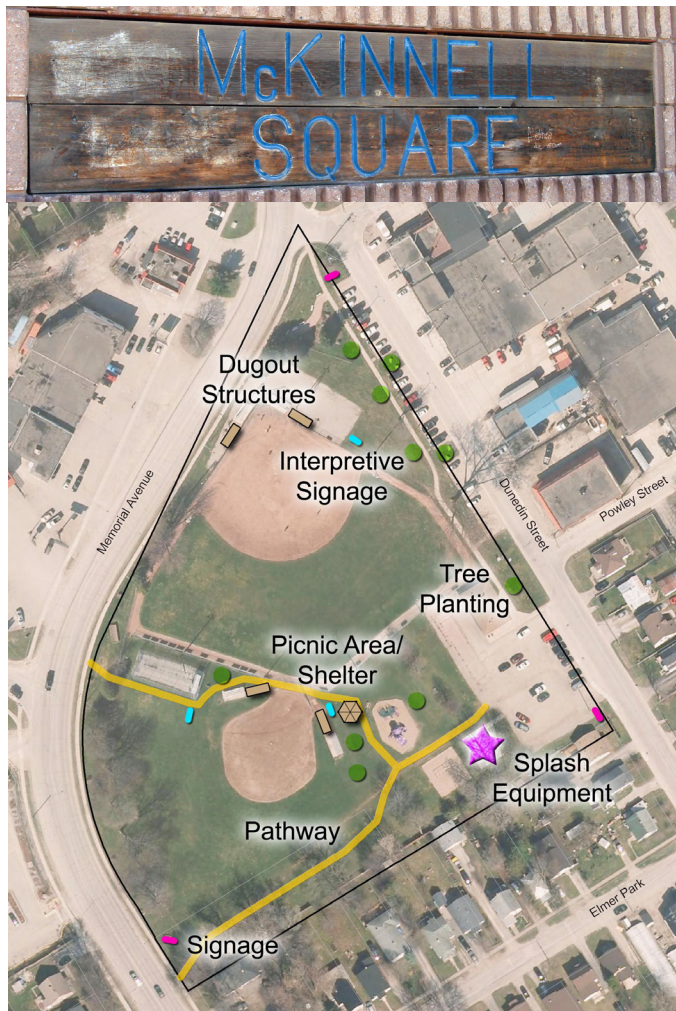
McKinnell Square Park

Yr. Acquired 1940 / 1984

Address: 135 Dunedin Street
Current Classification: Neighbourhood Park
Proposed Classification: Activity
Size: 6.1 acres - 2.5 hectares

Context: Mixed Use
Overall Quality: Good
Function: Active
Description: Kid Play & Sports Park

McKinnell Square Park is an amply programmed recreational area near the centre of the City. It is recommended to develop an asphalted pedestrian circulation system connecting amenities and transversing through the park. Standardized park identification signage should be located at both vehicular parking entrances and at the pedestrian entry at the southwest corner of the park. A covered pavilion should be built nearby the play equipment and the small ballfield. Interpretive signage is recommended for giving historical information regarding the naming of the facilities in the park. Further capital improvements include re-paving the parking lot and adding curb stops, tree planting to provide shade around the park's amenities and along Dunedin Street, dugout shade structures (4) and additional water play features at the existing splash pad.



Existing Facilities		
Type	Description	Overall Condition
Amenities (Qty)	Benches (8)	Good
	Picnic Tables (5)	Good
	Garbage Cans (9)	Good
	Drinking Fountain	Good
	Flag Pole	Good
Athletic Fields	Lighting (10)	Fair
	Ball Diamonds (2)	Good
	Batting Cages (2)	Poor
Circulation (LF)	Outdoor Ice Rink	N / A
	Paver Walkway (75)	Fair
Parking (Spaces)	Dirt Path(460)	Poor
	Asphalt (26)	Fair
Play Equipment	Asphalt (24)	Fair
	Jr/Sr Playsets (2)	Good
	Swing set	Good
Structures	Splash Pad	Fair
Trees	Washroom Bldg	Good
	Many (mature)	Fair

Capital Improvements	
Items	Est. Cost
Asphalt Pedestrian Circulation System	\$21,000
Park Entry / Signs/Gateways (3)	\$15,000
Seating Area/Shelter	\$55,000
Augmentation to Existing Splash Pad	\$40,000
Dugout Shade Structures (4)	\$40,000
Interpretive Signage (3)	\$15,000
Tree Planting (10)	\$4,000
TOTAL	\$175,000