

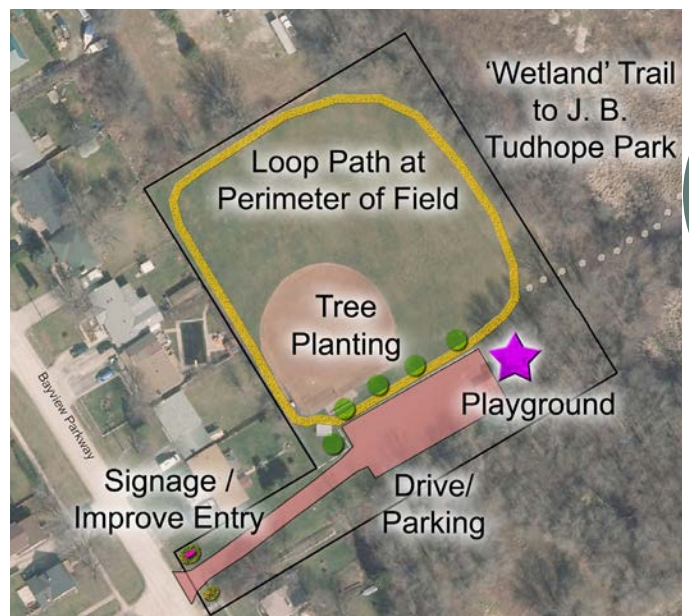
Bayview Park

Yr. Acquired 1948

Address: 335 Hilda Street
Current Classification: Parkette
Proposed Classification: Leisure
Size: 2.7 acres - 1.1 hectares

Context: Residential / Open Space
Overall Quality: Fair
Function: Active
Description: Sports Park

Bayview Park is a small parkette with a granular parking lot and a dirt infield ball diamond. Suggested improvements include standardized park identity signage and improved entry appearance to the park at the street interface. Small scale playground equipment should be situated in the park (at end of parking lot within the wooded area) for neighbourhood use. A loop pathway (granular or hard surface) around the perimeter of the park would be an added amenity when the ball field is not in use. Trees should be planted beside the parking lot and along the perimeter for better definition of areas, shade and screening from adjacent residential properties. In the short term, the ball diamond should remain in the park due to current recreational needs. In the long term, when other recreational space becomes available, it should be removed. Also in the long term, consider extending a trail to/through the adjacent woods/wetlands (or along Hilda St R.O.W. to Hwy 12 By-pass) to connected with Atherley Road and Tudhope Park (note: the City would need to acquire land or broker an easement with the adjacent property owner(s) to develop this trail extension). Ideally, interpretive signage would be situated along this trail. Other long term improvements include asphaltting the drive and parking area.



Existing Facilities		
Type	Description	Overall Condition
Amenities (Qty)	Sports Benches (2)	Poor
	Bleachers (1)	Fair
	Garbage Cans (2)	Poor
Athletic Fields	Softball Diamond	Fair
Circulation (LF)	Granular Road (180)	Fair
Parking (Spaces)	22	Fair
Play Equipment	NONE	N / A
Structures	NONE	N / A
Trees	Forest Edge	Fair

Capital Improvements	
Items	Est. Cost
Interpretive Trails	\$45,000
Park Entry/Signage/Gateway	\$5,000
Tree Planting (5)	\$2,000
Play Equipment	\$35,000
Asphalt Drive / Parking	\$35,000
TOTAL	\$122,000