

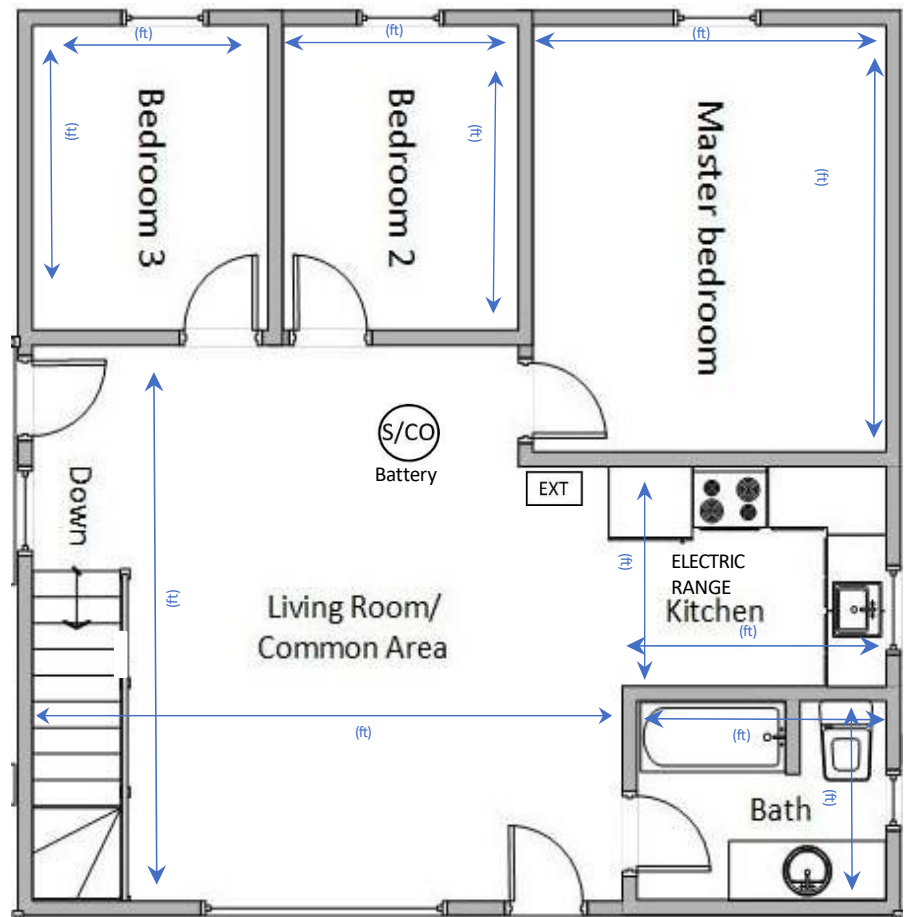


The following information must be shown on the floor plan:





- location, dimensions, and use of each room;
- note the number of bedrooms, and which bedrooms are being used as part of the short-term rental
- location of fixtures (i.e. toilet, bathtub, shower, or sink);
- all entrances/exits;
- location of all fuel-fired appliances (i.e. gas fireplace, stove, furnace, or hot water tank);
- location of all solid fuel-fired appliances (i.e. wood burning fireplace, woodstove or wood furnace);
- location of smoke alarms;
- location of fire extinguishers;
- location of carbon monoxide alarms if the short-term rental accommodation has a fuel-fired or solid fuel-fired appliance, or an attached garage;
- location and size of the egress window in the basement.

NOTES:

1. Use a separate sheet for each storey/floor.
2. Floor plan not required for a basement unless there are bedrooms located therein.
3. Measurements can be provided using imperial or metric system.



LEGEND

-  Combination Smoke & Carbon Monoxide Alarm
-  Smoke Alarm
-  Carbon Monoxide Alarm
-  Portable Fire Extinguisher

Egress Window Requirements

1. In a basement, each bedroom is required to have a window.
2. One egress window is required in the basement see below diagram.

